



THIRD BRAKE LIGHT ANTENNA MOUNT

2022 – 2024 Bronco Raptor



INSTALLATION MANUAL

INTRODUCTION

Thank you for your purchase of our vehicle specific Third Brake Light Antenna Mount! We hope that you find the installation straight forward. As our customer, your satisfaction is important to us, and for that reason we take pride in all the products that we design and manufacture to ensure a reliable solution for years to come!

Warranty

Our Third Brake Light Antenna Mounts offer a 1 -Year Parts-Only Warranty.

The limitations include:

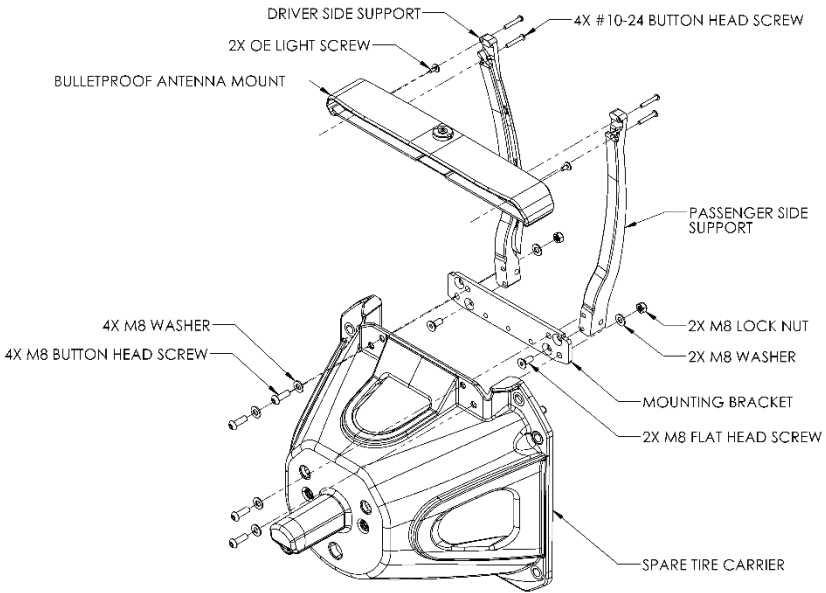
- Parts-only, exchange-only warranty.
- The warranty is limited to defects in workmanship and materials.
- Shipping is NOT included with warranty claims.

If you should have a warranty claim, please call us to assist you. We need to track and properly manage any warranty claims. To ensure this is handled properly, please call our team at 888-967-6653 or 480-247-2331 so we can help you with your options and return.

Tool List

- 13MM Wrench
- 13MM Socket and Ratchet
- 21MM Socket and Breaker Bar
- 5MM Allen Wrench
- 1/8" Allen Wrench
- T25 Torx Head
- T40 Torx Head
- Panel Popper
- Small Flat Head Screwdriver

Parts List – 90201250



Part Number

6502386	FORD BRONCO RAPTOR ANTENNA MOUNT	1
6502389	FORD BRONCO RAPTOR DRIVER SIDE SUPPORT	1
6502390	FORD BRONCO RAPTOR PASSENGER SIDE SUPPORT	1
6502392	FORD BRONCO RAPTOR ANTENNA MOUNT BRACKET	1
6200016	M8 WASHER	6
6200017	M8 X 1.25 NYLON LOCK NUT	2
6200248	M8 X 1.25 X20MM FLAT HEAD SCREW	2
6200249	M8 X 1.25 X25MM BUTTON HEAD SCREW	4
6200265	3/16" X 8" L ZIP TIE	4
6200169	#10 – 24 X 1" BUTTON CAP SCREW	4

INSTALLATION STEPS:

Step 1: Remove the spare tire using breaker bar and socket.



Step 2: Open the rear door and remove the five (5) screws that are accessible on the back side of the third brake light.



Step 3: Remove the four (4) screws attaching the light to the spare tire mount.



Step 4: Gently lift out and lay the light over the tire mount. Remove the remaining four (4) screws from the light.

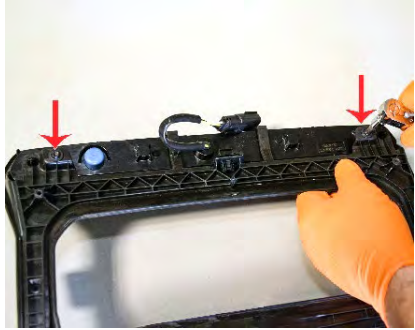


Step 5: Separate the halves of the light housing and set the free half and the internal metal bracket aside (you will need these to return to OE). Disconnect the push in wire retaining clip and unplug the wire from the brake light. The light can now be removed from the vehicle.



TIP: Drop the wire through the spare tire carrier to keep it out of the way.

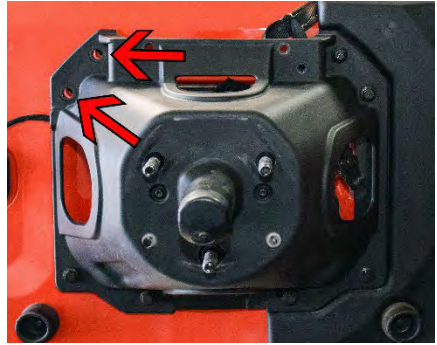
Step 6: Unclip the light harness and remove the two (2) screws that secure the OE brake light. Remove the brake light from housing.



Step 7: Loosen all eight (8) bolts holding on the spare tire carrier.



Step 8: Remove the two (2) top driver side bolts from the spare tire carrier and set aside.



Step 9: Route the antenna cable through the driver side opening of the antenna mount light housing.



Step 10: Attach the vertical supports to the antenna mount light housing using the four (4) supplied #10 button head screws **HAND TIGHT** to align the vertical supports. Do not tighten.

NOTE: The wire channels on the supports face inward.



Step 11: Attach the antenna mount bracket using the supplied two (2) M8 flat head screws in the lower countersunk holes and TIGHTEN.

NOTE: These screws will NOT be accessible once installed.



Step 12: Remove the four (4) #10 button head screws and antenna mount light housing from the vertical supports (from Step 9).



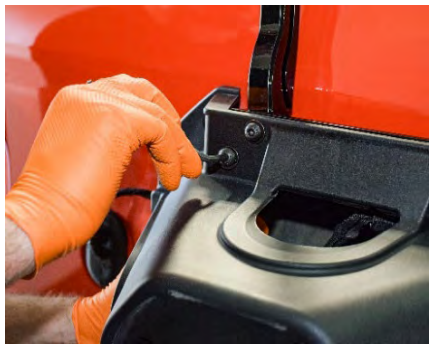
Step 13: Pull spare tire carrier away from rear door and maneuver antenna mount assembly into place passenger side first. Install two (2) each of the supplied M8 button head screws and washers into the upper holes HAND TIGHT.



Step 14: Install two (2) of the supplied M8 button head screws, four (4) washers and two (2) lock nuts into the lower holes.



Step 15: Tighten the four (4) M8 button head screws securing the antenna mount to the spare tire carrier.



Step 16: Replace the two (2) OE upper bolts on the spare tire carrier and tighten ALL the bolts that were loosened.



Step 17: Pull the OE brake light wiring back up through the spare tire carrier. Secure the retaining clip in the mount bracket hole.



Step 18: Run the OE light wires up through the inside channel of the driver side support.



Step 19: Feed the OE light plug through the driver side hole in the antenna mount light housing.



Step 20: Press the antenna cable into the wire channel at the top of the driver side support on top of the OE wires. Guide the wires as the antenna mount is assembled onto the supports to ensure that the wires do not get pinched.

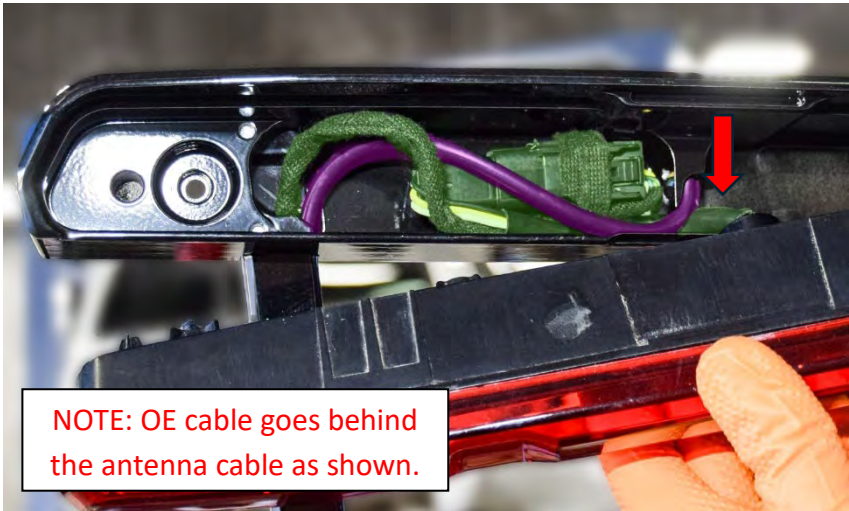


Step 21: Secure the antenna mount light housing to the vertical supports using the four (4) #10 button head screws and tighten.



Step 22: Plug the OE wires into the brake light. Position the wires immediately exiting the back of the light such that they pass **BEHIND** the antenna cable as shown. Ensure that the connector is positioned as close to the center of the antenna light housing as possible and rotated so that it is as shallow as possible and install the brake light.

NOTE: Failure to position the connector correctly may cause interference with the brake light and not allow it to fully seat properly into the antenna mount light housing.



NOTE: OE cable goes behind the antenna cable as shown.

Step 23: Use the OE hardware to secure the brake light to the antenna mount.

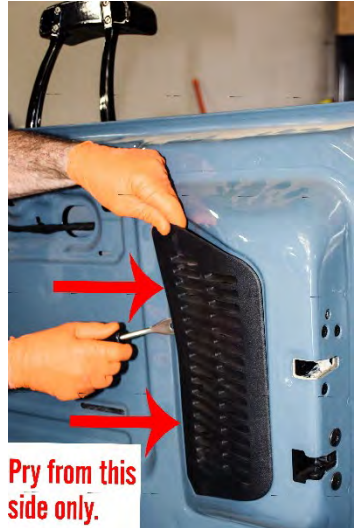


Step 24: Press the antenna cable into the entire length of the support. Run the supplied zip-tie through the hole in the bottom of the driver side support and around to secure the OE light wires and antenna cable in place.



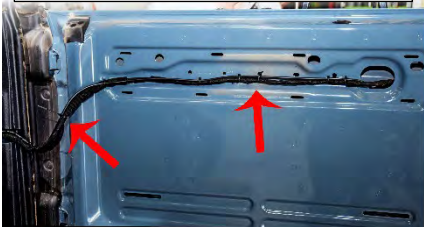
Step 25: Remove the interior trim pieces inside the door.

TIP- Pry from the bottom of the long piece and the left of the vertical piece to avoid breaking clips.



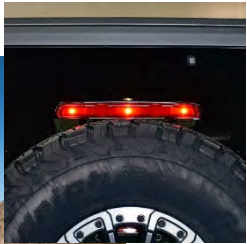
Step 26: Route the antenna cable to the inside of the truck through the cab vent. Fish through the inside of the door and zip tie the wire to the existing cables.

This is where we zip tied ours



Step 27: Replace the interior panels and make sure all the hardware is tightened.

Step 28: Replace the spare tire on the mount.





@bulletproofdest



480.247.2331 888.967.6653 bulletproofdiesel.com

