

**DRIVER SIDE EXPLODED VIEW SHOWN
PASSENGER SIDE SIMILAR**

ITEM NO.	QTY	PART NUMBER	DESCRIPTION	NOTES
14	1	6502200	Intercooler Tube Stub, 3" OD	
13	1	6502201	Intercooler Tube Stub, 3-1/4" OD	
12	2	6502165	Intercooler Side Tank Support Tab	
11	1	6502143	Intercooler Mount Passenger Side Gusset	
10	1	6502136	Intercooler Mount Driver Side Gusset	
9	2	6502141	Intercooler Mount Tab B	
8	2	6502142	Intercooler Mount Tab A	
7	2	6502133	Intercooler Mount Frame	
6	1	6502138	Passenger Side Backing Plate	
5	1	6502139	Passenger Side Outer Cover	
4	1	6502131	Driver Side Backing Plate	
3	1	6502132	Driver Side Inlet Cover	
2	1	6502137	Passenger Side Outlet Plate	
1	1	6502130	Driver Side Inlet Plate	

PARTS LIST



PROPRIETARY AND CONFIDENTIAL
THE INFORMATION CONTAINED IN THIS DRAWING IS THE SOLE PROPERTY OF NEAL TECHNOLOGIES, INC. ANY REPRODUCTION IN PART OR AS A WHOLE WITHOUT THE WRITTEN PERMISSION OF NEAL TECHNOLOGIES, INC. IS PROHIBITED.

UNLESS OTHERWISE SPECIFIED:
DIMENSIONS ARE IN INCHES
TOLERANCES:
FRACTIONAL: ±1/32
ANGULAR: ±0.5°
TWO PLACE DECIMAL ± 0.03
THREE PLACE DECIMAL ± 0.010

INTERPRET GEOMETRIC TOLERANCING PER: ASME Y14.5M

MATERIAL: AL 6061
FINISH: N/A

DO NOT SCALE DRAWING

NAME	DATE
DRAWN: WILDERSON	7/31/13
CHECKED:	
ENG APPR.:	
MFG APPR.:	
COMMENTS:	

NEAL TECHNOLOGIES, INC.
4245 E. PALM STREET, MESA, AZ 85215

TITLE:
ALUMINUM TANK INTERCOOLER KIT FORD 6.0L

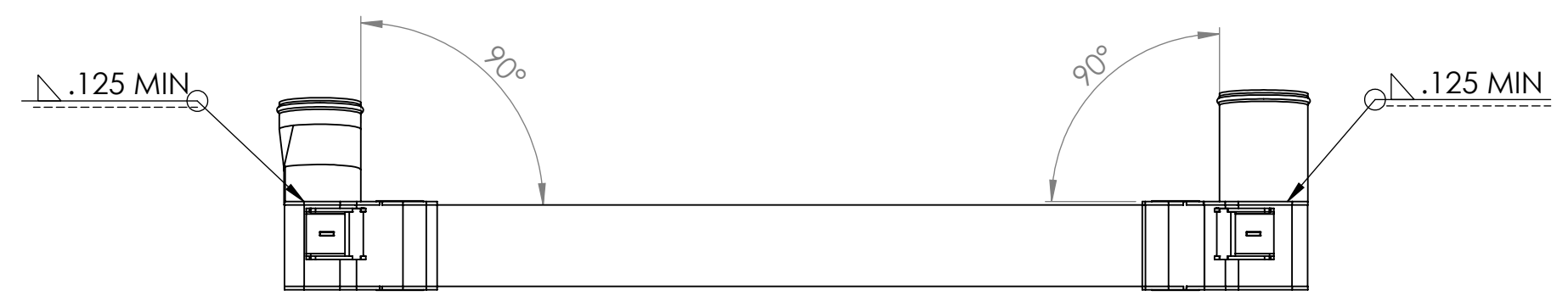
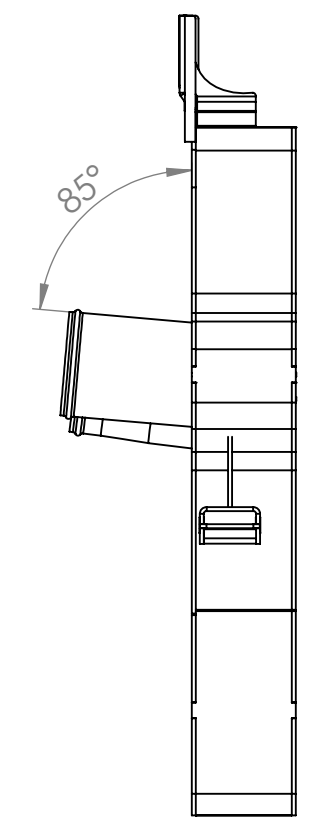
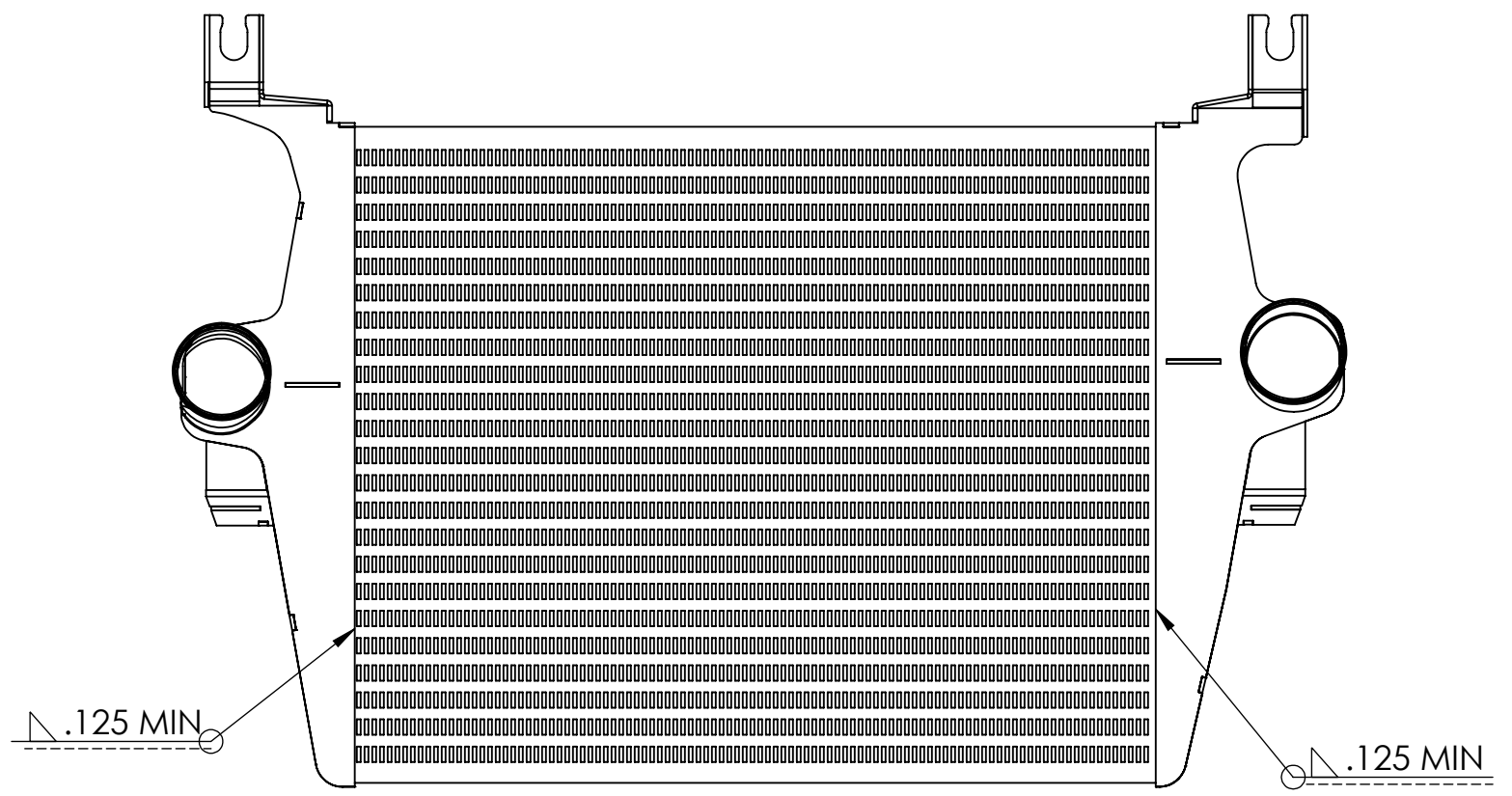
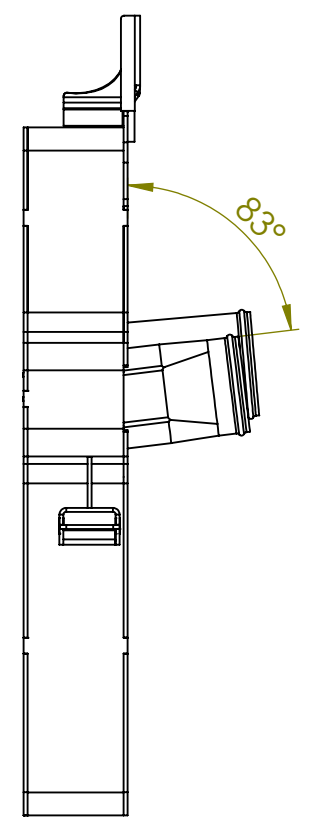
SIZE: B	DWG. NO.: 90201044	REV: 2
----------------	--------------------	--------

SCALE: 1:6 WEIGHT: SHEET 1 OF 3

NEXT ASSY:	USED ON:
APPLICATION: 6.0L F-Series	

D
C
B
A

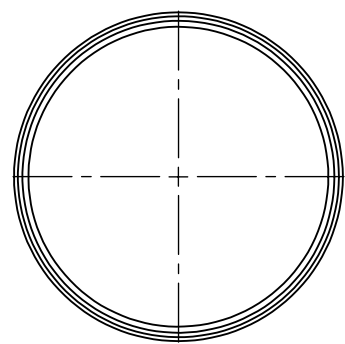
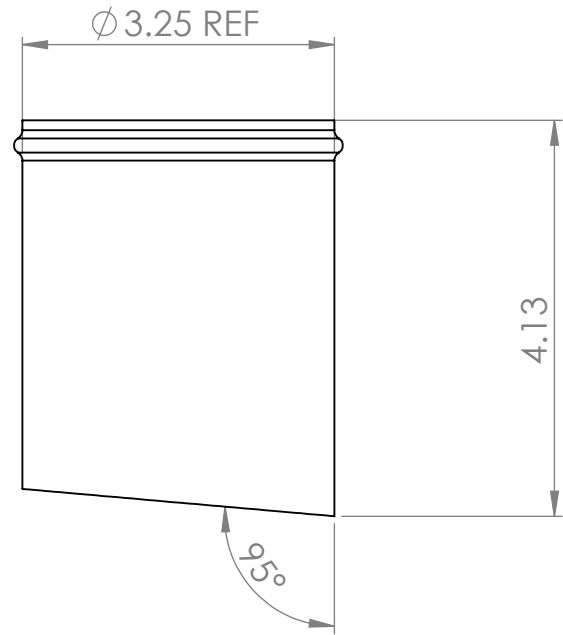
D
C
B
A



NEAL TECHNOLOGIES, INC. 4245 E. PALM STREET, MESA, AZ 85215		SIZE B	DWG. NO. 90201044	REV 2
SCALE: 1:6		WEIGHT:		SHEET 2 OF 3

8 7 6 5 4 3 2 1

PASSENGER SIDE INLET MODIFICATION P/N: 6502201



DRIVER SIDE OUTLET MODIFICATION P/N: 6502200

