

**DRIVER SIDE EXPLODED VIEW SHOWN  
PASSENGER SIDE SIMILAR**

ITEM NO.	QTY	PART NUMBER	DESCRIPTION	NOTES
13	2	6502200	Intercooler Tube Stub, 3" OD	
12	2	6502165	Intercooler Side Tank Support Tab	
11	1	6502143	Intercooler Mount Passenger Side Gusset	
10	1	6502136	Intercooler Mount Driver Side Gusset	
9	2	6502141	Intercooler Mount Tab B	
8	2	6502142	Intercooler Mount Tab A	
7	2	6502133	Intercooler Mount Frame	
6	1	6502138	Passenger Side Backing Plate	
5	1	6502139	Passenger Side Outer Cover	
4	1	6502131	Driver Side Backing Plate	
3	1	6502132	Driver Side Inlet Cover	
2	1	6502137	Passenger Side Outlet Plate	
1	1	6502130	Driver Side Inlet Plate	

**PARTS LIST**



**PROPRIETARY AND CONFIDENTIAL**  
THE INFORMATION CONTAINED IN THIS DRAWING IS THE SOLE PROPERTY OF NEAL TECHNOLOGIES, INC. ANY REPRODUCTION IN PART OR AS A WHOLE WITHOUT THE WRITTEN PERMISSION OF NEAL TECHNOLOGIES, INC. IS PROHIBITED.

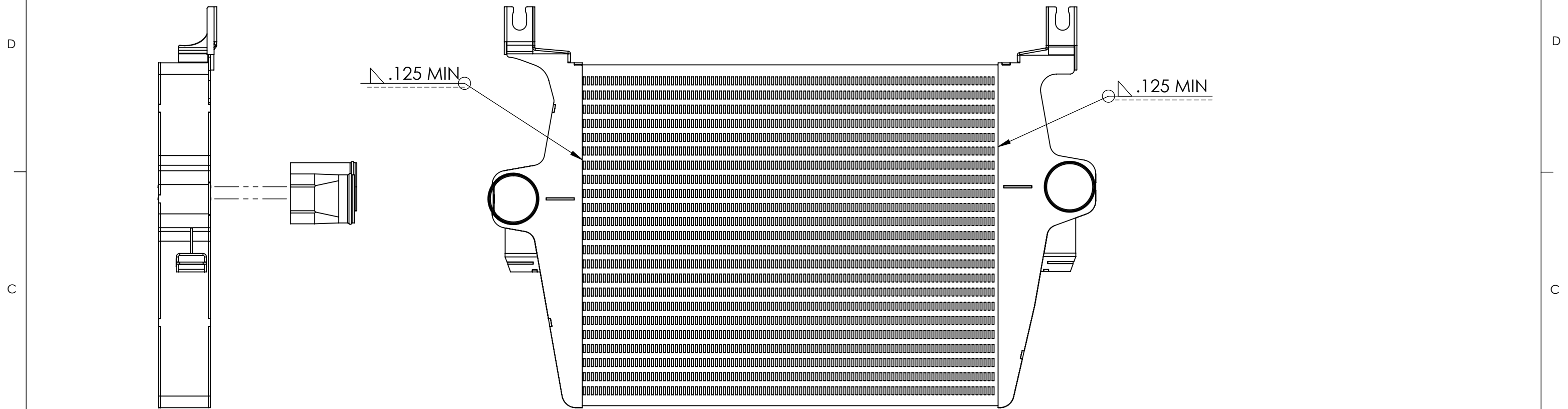
UNLESS OTHERWISE SPECIFIED:	NAME	DATE
DIMENSIONS ARE IN INCHES	DRAWN	WILDERSON 7/31/13
TOLERANCES:	CHECKED	
FRACTIONAL: ±1/32	ENG APPR.	
ANGULAR: ±0.5°	MFG APPR.	
TWO PLACE DECIMAL ± 0.03	COMMENTS:	
THREE PLACE DECIMAL ± 0.010		
INTERPRET GEOMETRIC TOLERANCING PER: ASME Y14.5M		
MATERIAL		
7.3L F-Series		
AL 6061		
FINISH		
N/A		
APPLICATION		
DO NOT SCALE DRAWING		

**NEAL TECHNOLOGIES, INC.**  
4245 E. PALM STREET, MESA, AZ 85215

TITLE:  
**ALUMINUM TANK INTERCOOLER KIT FORD 7.3L**

SIZE	DWG. NO.	REV
<b>B</b>	90201064	1

SCALE: 1:6 WEIGHT: SHEET 1 OF 3

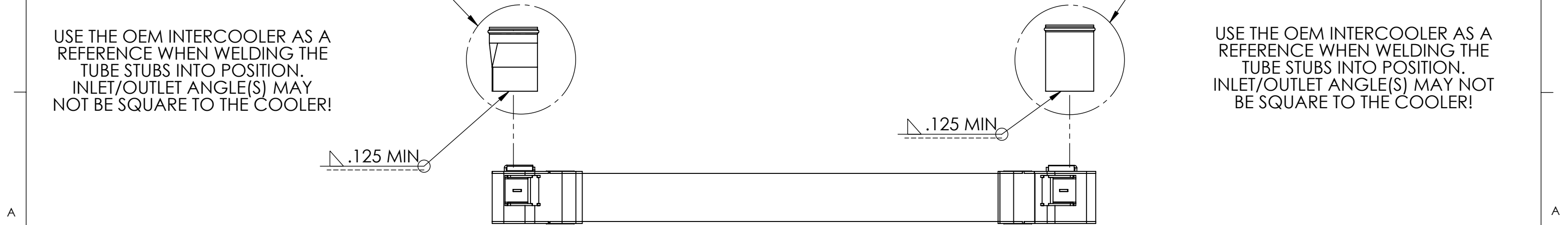


**TRIM PART TO FIT BEFORE INSTALLATION!**

USE THE OEM INTERCOOLER AS A REFERENCE WHEN WELDING THE TUBE STUBS INTO POSITION. INLET/OUTLET ANGLE(S) MAY NOT BE SQUARE TO THE COOLER!

**TRIM PART TO FIT BEFORE INSTALLATION!**

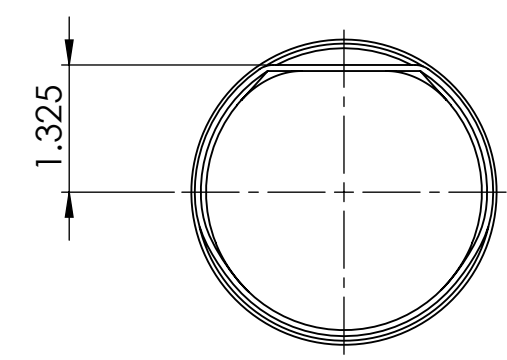
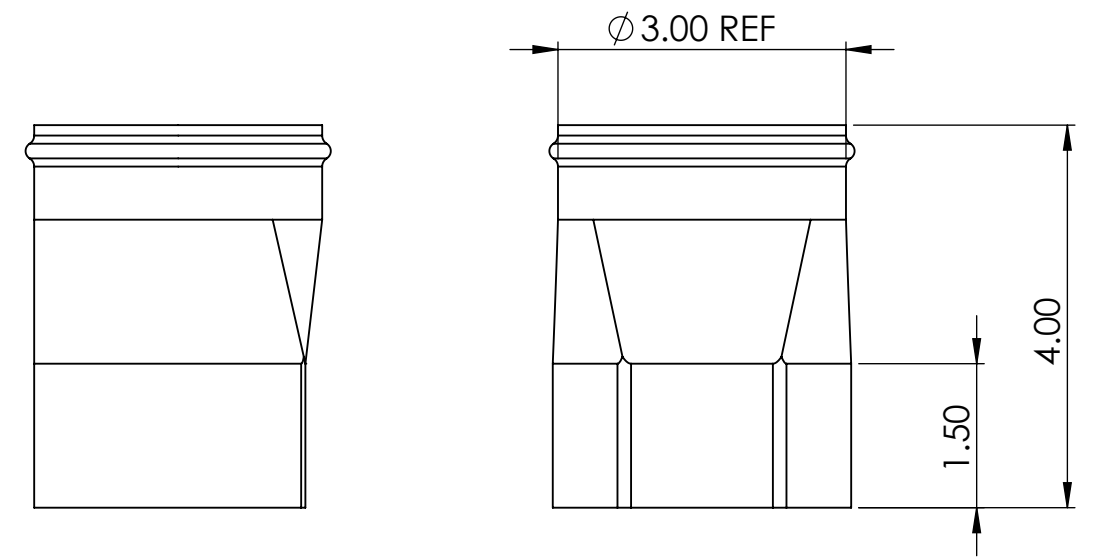
USE THE OEM INTERCOOLER AS A REFERENCE WHEN WELDING THE TUBE STUBS INTO POSITION. INLET/OUTLET ANGLE(S) MAY NOT BE SQUARE TO THE COOLER!



**NEAL TECHNOLOGIES, INC.**  
4245 E. PALM STREET, MESA, AZ 85215

SIZE	DWG. NO.	REV
<b>B</b>	90201064	1
SCALE: 1:6	WEIGHT:	SHEET 2 OF 3

**2 DRIVER SIDE OUTLET MODIFICATION  
P/N: 6502201**



<b>NEAL TECHNOLOGIES, INC.</b> 4245 E. PALM STREET, MESA, AZ 85215	SIZE	DWG. NO.	REV
	<b>B</b>	90201064	1
SCALE: 1:1		WEIGHT:	SHEET 3 OF 3